

# MicroLite

The plug & record mini data logger

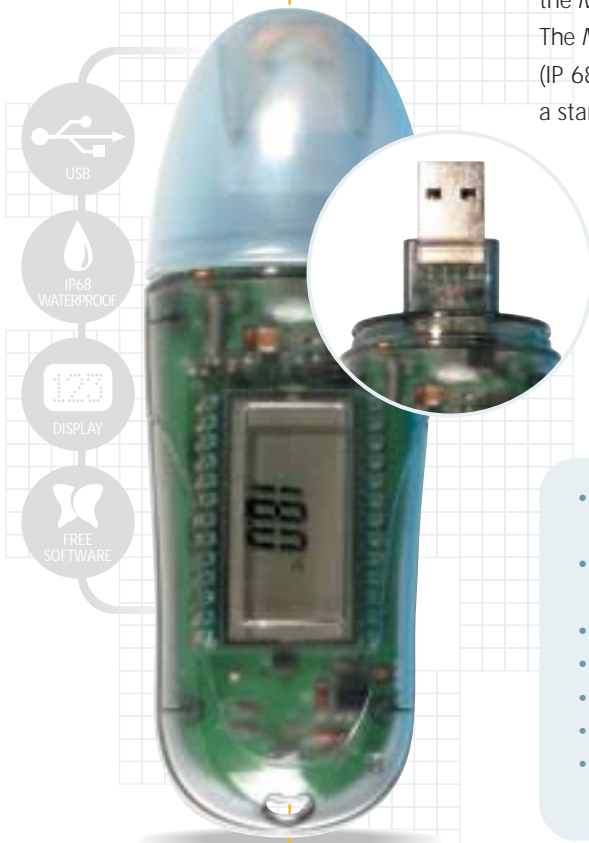


Aesthetic and innovative, *MicroLite* is a small data logger for monitoring and recording temperature. *MicroLite* is the ultimate plug and record data logger. Despite the compact design, *MicroLite* data is clearly displayed on the logger's numeric screen. In addition, the *MicroLite* stored data can be downloaded automatically to the *MicroLab Lite* software. The *MicroLite* has been dustproof and waterproof tested to meet highest market standards (IP 68). To further ensure easy global usage, the battery is easily replaceable since it is a standard model used worldwide.

*MicroLite* works with *MicroLab Lite* software, which can be downloaded for free directly from the Fourier Systems Ltd. website: [www.fouriersystems.com](http://www.fouriersystems.com).

The product is designed for ultimate application accessibility, whether mobile or static. Typical applications for this product include transportation as well as warehousing of food, drugs and hi-tech equipment.

- High functionality yet low cost enabling use as one-trip logger
- High resolution 16-bit (0.1°C) data logger
- Range -40°C to 80°C
- High accuracy 0.3°C
- 16,000 sample memory
- High sampling rate of 1 per second
- Long life battery using NanoWatt technology
- USB 2.0 interface enabling fast track communication
- LCD display with decimal point reading
- Magnet key to activate logging
- Min/Max and alarm level readings
- Built-in real-time clock and calendar
- Complimentary MicroLab Lite analysis software



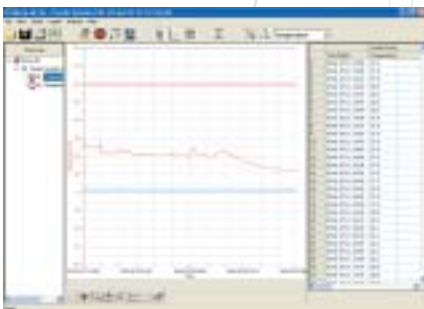


## Specifications



<b>Internal Sensor</b> Temp: Standards compliance:	-40 to 80 °C > Dust and Waterproof IP68 > Thermal conductor enabling fast response time	<b>Weight</b>	45.5 gr
<b>Outputs</b>	USB 2.0 communication	<b>Display</b>	> LCD with decimal point > Visual Alert - Alarm icon when crossing predefined thresholds > Low battery indication
<b>Sampling</b> Resolution: Capacity: Sampling rate: Accuracy:	A/D resolution: 16-bit, 0.1°C Memory capacity: 8KB, 16KB 1 per second to 1 per 2 hours 0.3°C	<b>Operation</b>	> Data scroll on the LCD > Reed switch to start measuring
<b>Power Supply</b> Battery life:	> 2 years at 1 sample per minute > Replaceable 3V lithium battery CR2032	<b>Software</b>	> MicroLab Lite for Windows 98/2000/ME/XP/NT 4.0 or higher > Also available – DatPass 21 CFR Part 11 Standards Compliance Software
<b>Design</b> Dimensions:	> 11 x 3.9 x 2.6 cm > Strap-on capabilities	<b>Standards Compliance</b>	CE, FCC compliance
<b>Ordering Information</b>			
<b>Item</b>	<b>Memory</b>	<b>P/N</b>	
MicroLite .....	8,000 samples .....	LITE5008	
MicroLite .....	16,000 samples .....	LITE5016	

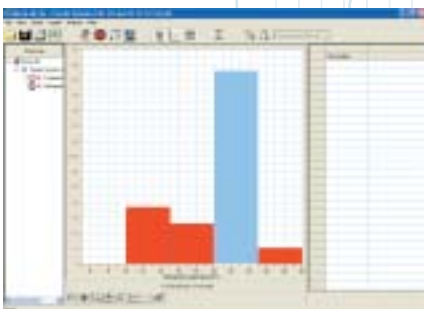
## MicroLab Lite Software



MicroLite works with *MicroLab Lite* software whose features have been designed specifically in response to requests from the field enabling a broader and more complex range of application environments. Features include analysis functionality such as Statistics – maximum, minimum and average, enabling a quick glance summary of the environment and historical analysis. This is typically useful for applications requiring a constant bird's eye picture of the conditions their materials are kept in.

### MicroLab Lite features

- Complete data analysis
- Downloads from *MicroLite*
- Graph and table displays
- Alarm levels per *MicroLite* displays
- Ability to set-up *MicroLite*
- Comments for each data logger
- Daily status reports in various formats



### Advanced data analysis features

- Mean kinetic temperature, an expression of cumulative thermal stress in different temperatures during storage, transportation and distribution.
- Pasteurization provides analysis for the most common methods of pasteurization in Industry: High Temperature Short Time (HTST); Ultra Pasteurization (UP) and Ultra High Temperature (UHT) pasteurization.
- Histogram provides a graphical view of historical results presented according to defined parameters of periods of time and percentage levels. This provides a level of analysis which can be tailored to specific environment needs for an immediate picture.
- Annotation enables text to be placed on the graph at relevant points where certain information needs to be highlighted.
- Data records can be exported to your preferred spreadsheet application.
- GMT Recording - Set data recording to meet with GMT Greenwich Mean Time, for use in international environments, particularly export and import.