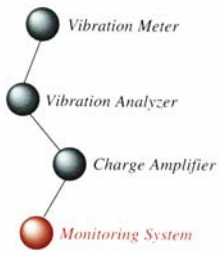


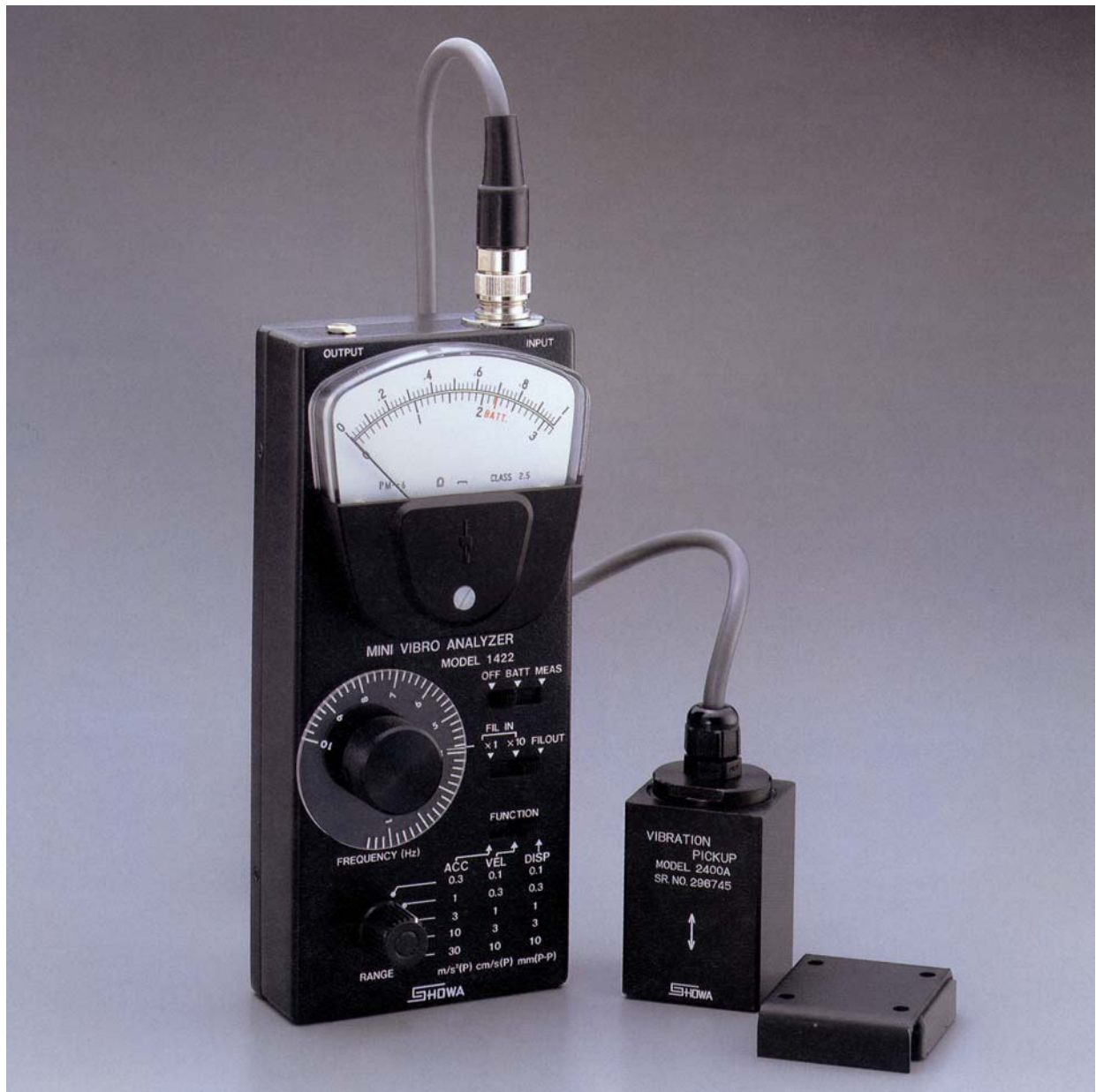
“安全と快適”そのニーズにこたえる

SHOWA

MINIVIBRO FOR LOW FREQUENCY



Model-1422A



MINIVIBRO FOR LOW FREQUENCY *MODEL-1422A*

General Description

This apparatus is capable of easily measuring the vibration acceleration, velocity and displacement of frequencies within the range of 2-100 Hz by using a lowband acceleration pickup with a preamplifier and also analyzing the major components of vibration by a built-in tunable filter.

Composition

Minivibro	Model-1422A	: 1unit
Vibration pickup	Model-2400A	: 1unit
Pickup cable	3m	: 1pc
Dry battery (006P)	Encased in main body	: 1pc
Output cord	1m with plug	: 1pc
Instruction manual		: 1copy
Portable case		: 1pc

Specifications

Measuring full scale range (5 range by 10dB step)

- a) Acceleration range : 0.3, 1, 3, 10, 30m/s² (Peak)
- b) Velocity range : 0.1, 0.3, 1, 3, 10cm/s (Peak)
- c) Displacement range : 0.1, 0.3, 1, 3, 10mm (P-P)

Frequency characteristics : 2~100Hz within ±5%

Stability : Sine wave 16Hz, within 2%
at acceleration measurement

Error of range changeover : within 2%

Meter : Double scale of 0~1 and 0~3 and BATT mark,

Accuracy : within 2.5% of full scale

Output : AC output ±1V/FS

Output impedance 1KΩ

Frequency analysis : Accuracy of analyzed frequency;
Less than 1/2 of minimum graduation
Of dial, Q=10 2range
× 1: 1Hz~10Hz, × 10: 10Hz~100Hz

Range of temperature : Operation: 0°C~+50°C

: Storage : -20°C~+70°C

Power source : Dry battery 006P (9V) 1pc

Continuous operating time: 10Hr

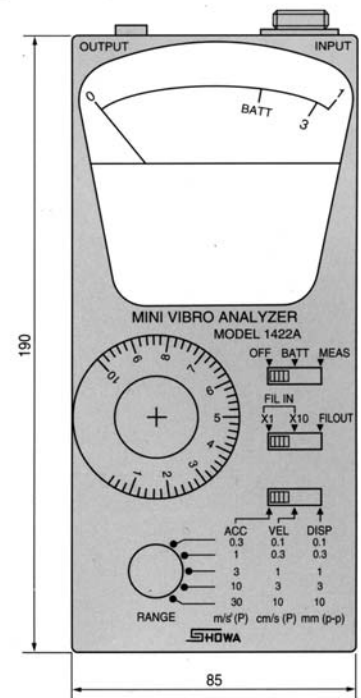
Pickup (Refer to the attached drawing)

Model-2400A : Detection sensitivity 100mV/m/s²

Dimension, weight : Model-1422A: (W) 85 × (H) 190 × (D) 55mm 750g

: Model-2400A: (W) 40 × (H) 55 × (D) 40mm 200g

■ Model-1422A



■ Model-2400A

